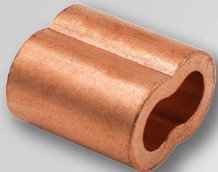




All Swage-Right Swage and Stop Sleeves are Made in the U.S.A.

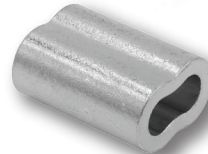
# Wire Rope Swage & Stop Sleeves

Swage-Right® swage sleeves are the ultimate in strength and reliability, crafted from top-quality copper, aluminum, or stainless steel. Whether you need duplex or single configurations, these sleeves ensure a rock-solid connection, making them the go-to choice for demanding applications where failure is not an option. **Other sizes available by special order.**



## PLAIN COPPER DUPLEX SLEEVES SKU: S-10

- Material: Copper
- Meets U.S. Military Standard MS51844-4
- Diameters: 1/32", 3/64", 1/16", 3/32", 1/8", 5/32", 3/16", 7/32", 1/4", 5/16", 3/8", 1/2"



## ZINC PLATED COPPER DUPLEX SLEEVES SKU: S-11

- Copper, Zinc-Plated
- Meets U.S. Military Standard MS51844-2
- Diameters: 1/32", 3/64", 1/16", 3/32", 1/8", 5/32", 3/16", 7/32", 1/4", 5/16", 3/8", 1/2"



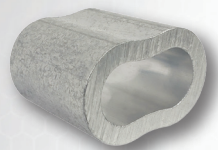
## TIN PLATED COPPER DUPLEX SLEEVES SKU: S-13

- Copper, Tin-Plated
- Meets U.S. Military Standard MS51844-8
- Diameters: 1/16", 3/32", 1/8", 5/32", 3/16", 1/4", 5/16", 3/8", 1/2"



## ALUMINUM DUPLEX SLEEVES SKU: S-40

- Material: Aluminum
- Diameters: 1/32", 3/64", 1/16", 3/32", 1/8", 5/32", 3/16", 7/32", 1/4", 5/16", 3/8", 7/16", 1/2"



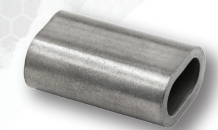
## THINWALL ALUMINUM DUPLEX SLEEVES SKU: S-40TW

- Material: Aluminum
- Diameters: 3/32", 1/8", 5/32"



## ALUMINUM FIBER ROPE DUPLEX SLEEVES SKU: S-50

- Material: Aluminum
- Diameters: 1/8", 3/16", 1/4", 3/8", 7/16"



## STAINLESS STEEL SLEEVES SKU: S-30

- Material: Stainless Steel
- Meets U.S. Military Standard MS51844-6
- Diameters: 1/32", 3/64", 1/16", 3/32", 1/8", 5/32", 3/16"



## ALUMINUM STOP SLEEVES SKU: S-61

- Material: Aluminum
- Diameters: 1/16", 3/32", 1/8", 5/32", 3/16", 7/32", 1/4", 5/16", 3/8"



## PLAIN COPPER STOP SLEEVES SKU: S-60

- Material: Copper
- Diameters: 1/32", 3/64", 1/16", 3/32", 1/8", 5/32", 3/16", 7/32", 1/4", 5/16", 3/8"

**Sold in convenient packs, by the case, or by the pallet!**

- ALWAYS IN STOCK, SHIPPED FAST AND ON-TIME
- SWAGING TOOLS AVAILABLE FOR ALL SIZES & MATERIALS
- GALVANIZED & STAINLESS STEEL WIRE ROPE
- ALSO AVAILABLE \*COMMON CONSTRUCTIONS
- COMPETITIVE PRICING - CALL 888-260-7444 FOR A QUOTE



Swage-Right duplex copper swage sleeves are manufactured in the U.S.A. to U.S. Military Standard MS-51844.

